



KONICA MINOLTA

AccurioPress
6272P

TRANSFORM YOUR MONOCHROME BUSINESS AT MAXIMUM SPEED

RETHINK PRINT



Giving Shape to Ideas

THE ACCURIOPRESS 6272P

MORE THAN MONOCHROME PRODUCTION PRINTING— MONOLITHIC PRODUCTIVITY AND PROFITABILITY

Now you can take your monochrome production print business to monumental new levels. The new Konica Minolta AccurioPress 6272P is our flagship monochrome model, with continuous print speeds of 272 ipm for 8.5" x 11" and 156 ipm for 11" x 17". Featuring a dual-engine system based on the highly successful single-engine AccurioPress 6136P, it not only offers blazing speed but also best-in-class productivity, reliability, durability and automation. This is more than monochromatic print production – it's monolithic productivity for greater profitability.

EXCEPTIONAL QUALITY WITH EVERY PRINT

The AccurioPress 6272P series comes loaded with innovations that produce outstanding print quality, including an ultra-precise LED printhead (LPH) with impressive 1,200 dpi resolution, advanced and highly stable transfer-belt technology and Konica Minolta's unique, enhanced screening technology that noticeably boosts detailed text and screen gradation quality.

HIGH VOLUME, LITERALLY

Longer runs? No longer a problem. The 6272P series can be configured to reach a maximum of 18,000 sheets of continuous paper supply with three PF-710 high capacity paper feed units. Up to three high capacity inline stackers can support a maximum paper stack capacity of 18,600 sheets. And with a maximum monthly duty cycle of 6,480,000 prints, this cut sheet production press will keep you and customers going strong, day after day and month after month.

ULTRA-PRECISE FRONT-TO-BACK REGISTRATION

No worries about registration-sensitive applications, like book blocks, technical documents and more. Image rotation and skew adjustment are operator-controllable for high-precision front-to-back registration. You — and your customers — will be impressed.



BUILD YOUR REPUTATION FOR HIGH-VOLUME MONOCHROME EXCELLENCE

THE ACCURIOPRESS 6272P SERIES SETS A NEW BAR FOR AFFORDABLE, HIGH-VOLUME PERFORMANCE

Unlike other production machines in the field, the 6272P supports a wide range of media in weights up to 350 gsm. Print quality is second to none, with 1,200 x 1,200 dpi. And its finishing options are exceptionally versatile — with stacking, stapling, folding, creasing, perfining, binding, booklet-making and more. The 6272P's impressive skill set and streamlined operations offer uninterrupted print runs of 18,000 sheets. Now that's high performance for high volumes.

SUPERIOR OPERABILITY

A large, 15-inch touch panel makes operating the 6272P series exceptionally easy because it provides greater visibility and simpler operability. Advanced job management support simplifies output work and reduces training and other labor costs.

DIVERSE PAPER PROFILES

Operators can specify paper size, air flow and media types per paper tray. Default optimum process settings are selectable instantaneously, allowing for faster, more efficient paper setups with each job – for up to 256 media profiles.

SEAMLESS OPERATIONS AND FLEXIBLE UTILITIES

- Get jobs started faster with the 6272P's easy-to-use, 15-inch touch panel.
- Choose from simple paper catalog settings.
- Access the simple AccurioPro Print Manager from a web browser for job management, page arrangement and hot folders — even edit tone curves on a per-job basis.
- Use your other Konica Minolta finishing options with the 6272P, including the SD-513, SD-506, FD-503, PB-503 and Plockmatic booklet makers.

IMPROVED EFFICIENCY WITH JOB TICKET/ PAGE EDITING

Your operators can view and edit job tickets, create previews and print sample output to confirm the desired results. This means complex and fine-scale output operations are efficient and waste-free, saving time and supporting your bottom line.

IQ-501* INTELLIGENT QUALITY OPTIMIZER FOR ACCURACY AND REAL-TIME CORRECTION

Imagine automated density and front-to-back registrations regardless of operator skill level. Picture constant, closed-loop correction on every page, automatically measured and managed – in real time – by your digital press. And it all works so simply, with at the touch of a button. The IQ-501 will drive your business results with:

- Tightly controlled density and registration
- Minimal adjustment time
- Less paper waste and lower associated costs
- Minimal manual intervention
- More uptime, less service with automated, autonomous self-correction

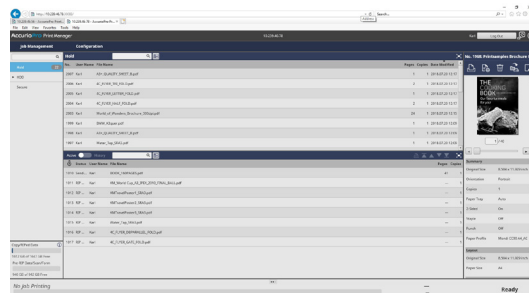
*Available June-July 2022

THE INTEGRATED PRINT SERVER PUTS JOBS ON THE FAST TRACK

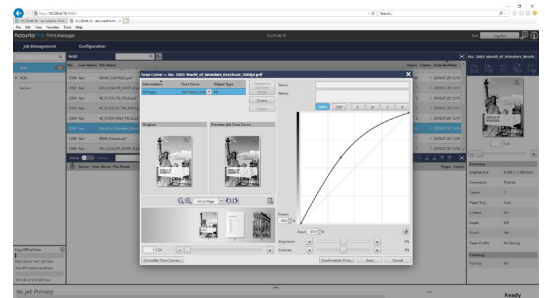
KONICA MINOLTA'S OWN CONTROLLER TECHNOLOGY PUTS OUTPUT UNDER YOUR CONTROL

- High-resolution printing is the result of true 1,200 dpi output. Thin lines for tables, graphs and multi-gradient images are crisp and vivid, making your customers' documents more impactful and persuasive.
- When color documents are printed, the input image is converted into CIE color space and then into the main unit's color space. The main unit processes rich gradients while maintaining high productivity.
- AccurioPro Print Manager is a standard tool for fast and easy job management to help you get the most from your production printing jobs. Choose from a variety of functions to improve your overall workflow, such as job monitoring, editing or hot folder functions.

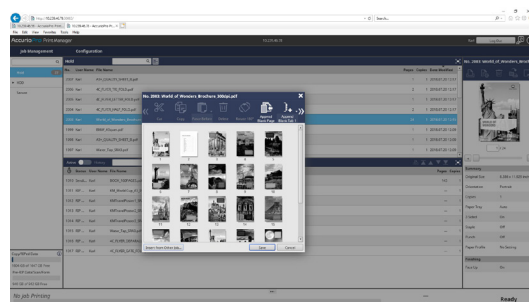
FUNCTIONS AND FEATURES



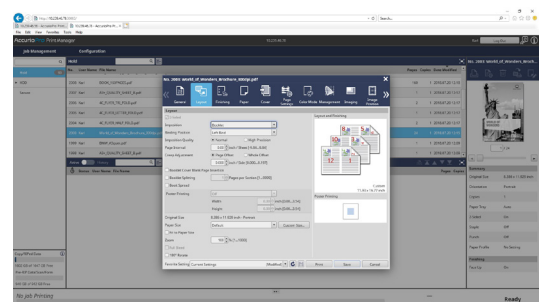
QUEUE MANAGEMENT



TONE CURVE UTILITY



PAGE EDITING



JOB PROPERTIES

STREAMLINE YOUR PRODUCTION RETHINK YOUR WORKFLOW

AccurioPro is the product of more than 80 years of Konica Minolta's experience in the printing and imaging industries. Our constantly evolving expertise in digital technologies reflects our commitment to market-shaping solutions that allow your business to grow. AccurioPro is Konica Minolta's suite of digital solutions for professional printing — and with the AccurioPress 6272P's speed and automated skill set, your business can take the lead in optimizing monochrome production and workflows.

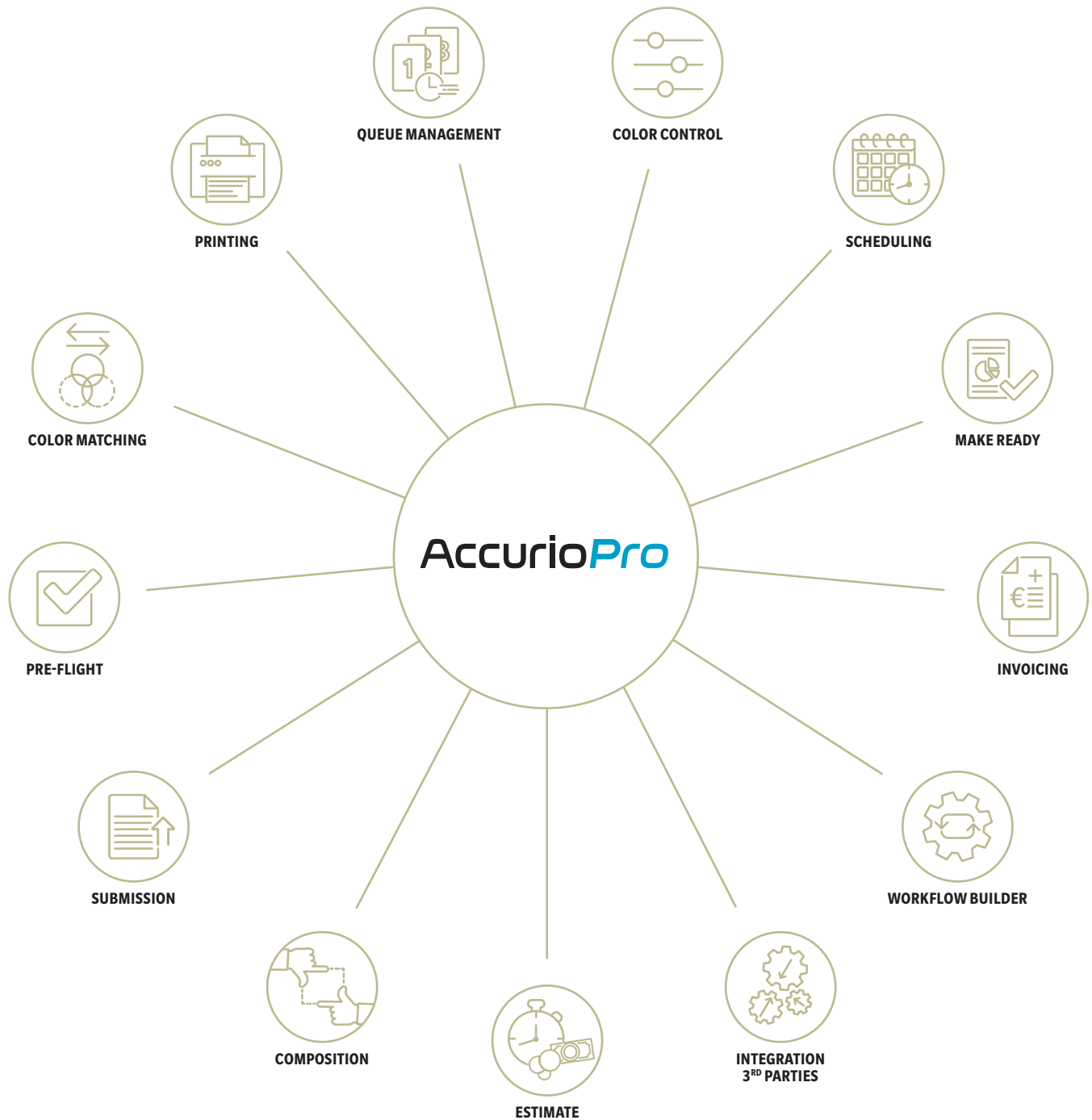
For all printing companies looking to integrate their printing, and organizations that use digital printing to produce their own in-house publications and promotional materials, AccurioPro boosts speed and efficiency, expands capabilities and services, and reduces the need for operational manpower – all of which will streamline your print jobs and boost your profitability.

AccurioPro's comprehensive suite of time-saving features includes centralized management, software for automated workflow processing, color management, seamless integration of different printing technologies and full connectivity with all Konica Minolta printing systems you use, from input to output.



PRODUCTION POSSIBILITIES

RETHINK YOUR WORKFLOW



SO MANY ADVANTAGES WITH AccurioPress 6272P

COMPREHENSIVE MEDIA PROCESSING

- Up to 350 gsm paper weight for simplex and duplex printing
- Wide range of media supported, including coated and uncoated stock
- Mechanical decurling as standard

AMAZING SPEED

- Up to 272 duplex 8.5" x 11" pages per minute
- Up to 156 duplex 11" x 17" pages per minute
- Uninterrupted print runs of up to 18,000 sheets

ON-DEMAND PRINT PRODUCTS

- Stacking up to 18,600 sheets
- Two-position and corner Stapling of up to 100 sheets with the automatic staple cut mechanism
- Booklet-making up to 200 pages (50 sheets)
- 2- and 3-hole punching
- Tri-folding up to 5 sheets

INLINE FINISHING

- Perfect binding up to 600 pages
- Six types of folding and post-insertion operations
- GBC Punch G3 with a wide variety of die sets for punching, creasing and perforation
- GBC Wire Binding for 8.5" x 11" and 5.5" x 8.5" wire-bound books
- Plockmatic booklet-makers with options for full-bleed, square-folded professional booklets

ENVIRONMENTAL CONSIDERATIONS

- Green procurement policy
- Reduced CO₂ emissions
- Paper-saving print sampling



EXCEPTIONAL PRINT CONTROL

- Proprietary Konica Minolta controller
- AccurioPro Print Manager to optimize overall workflow
- Easy drag-and-drop input for files, job queueing, page editing and hot folders
- Seamless integration of different printing technologies

EASE OPERATION

- Big 15-inch touch panel
- Simple paper catalog settings
- Step-by-step on-screen instructions



VERSATILE MEDIA HANDLING

- Optional bypass tray
- Up to 18,000-sheet paper input capacity
- Up to 11 paper input trays

OUTSTANDING IMAGE QUALITY

- 1,200 x 1,200 dpi resolution
- Simitri® HD toner technology
- Image density control technology
- Offset quality for monochrome output
- Up to 5,000 sheet post insertion capacity

FINISHING & FUNCTIONS



Letter fold



2/3 hole Punching



Two-point stapling



Corner stapling



Stacking



Booklet



Trimming

Open stacker
OT-512



Staple finisher
FS-532m



Booklet making unit
SD-513



Stacking unit
LS-507



Folding and punching unit
FD-503



Perfect binding unit
PB-503



Booklet making unit
SD-506



Multi punching unit
GBC G1



Multi punching unit
GBC G3



Plockmatic bookletmaker
SD-350/500









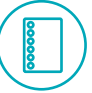



















Plockmatic bookletmaker
PSQ-160



Plockmatic bookletmaker
PSQ-224



	 Creasing	 Slitting	 Perforation	 Square-folding	 Multi Letter fold-In	 Post Insertion	 Perfect Binding	 Wire-binding	 Multi-punching	
										ENTRY
										
										MID
										
										HIGH
										
										
										
										

CONTROLLER

KONICA MINOLTA CONTROLLER

Type	Built-in type
Resolution	Print: 1,200 x 1,200 dpi; 600 dpi x 600 dpi
CPU	Intel Core i5 4570S 2.9 GHz
Memory	16 GB (DDR3U-DIMM X 2)
HDD	1 TB x 2
SSD	4 GB
Interface	10/100/1000Base-T, USB 3.0 host, USB 2.0
Page Description Language	PCL5E/XL (PCL6)/Adobe PostScript3 (PS3020)/PDF DirectPrint (PDF Ver.1.7)/TIFF DirectPrint (TIFF Ver. 6)/PPML(Ver. 2.2)/APPE 4.6 (UK-217 when installed)

TECHNICAL SPECIFICATIONS

SYSTEM SPECIFICATIONS

Resolution	1,200 x 1,200 dpi
Paper weight	40–300 gsm (350 gsm optional) ₁
Paper sizes	Standard:
	Min.: 7.17" x 5.47" (182 x 139 mm)
	Max.: 12.76" x 18.23" (324 x 463 mm)
Paper sizes	Optional:
	Min.: 3.74" x 5.47" (95 x 133 mm) ₁
	Max.: 12.76" x 19.02" (324 x 483 mm) ₂
Maximum image area	314 x 463 mm (up to 483 mm ₂ optional)
Paper input capacity	Standard: 3,000 sheets
	Max.: 18,000 sheets
Paper output capacity	Max.: 18,600 sheets
Main unit dimensions (W x D x H)	110.83 x 35.83" x 40.16" (2,815 x 910 x 1,020 mm) ₃
Main unit weight	1710.79 lbs (776 kg) ₃

PRODUCTIVITY (DUPLEX)

5.5" x 8.5"	272 ppm
8.5" x 11"	272 ppm
8.5" x 14"	180 ppm
11" x 17"	152 ppm

CONTROLLER

Embedded Konica Minolta controller

ACCESSORIES

Paper Feed Unit	PF-709
Preprinted Paper Kit	PP-701
Paper Feed Unit	PF-710
PI-PFU Connection Kit	FA-503
Heater for PF-701	HT-506
Intelligent Quality Optimizer ₄	IQ-501
Video Interface Kit	VI-512
Output Tray	OT-512
Post Inserter for FS-502	PI-502
Multi Folding Unit	FD-503
Large Stackers	LS-507
Stacker Cart	LC-502
Saddle Stitch Unit	SD-506
Saddle Stitch Unit - Front	SD-513/F
Saddle Stitcher	SD-513
Creaser Unit or SD-513	CR-101
Square Fold Module for SD-513	FD-504
Trimmer Unit for SD-513	TU-503
Perfect Binder	PB-503
Relay Unit	RU-518M
Humidification Unit for RU-518	HM-103
Staple Finisher	FS-532M
Saddle Stitch Unit	SD-510
Mount Kit for PI-506	MK-732
Punch Kit	PK-525
Relay Unit	RU-510
Apple Upgrade Kit	UK-217
Mount Kit for 3 rd Party Options	MK-737
Plockmatic Bookletmaker	SD-350
Plockmatic PowerSquare 160	
Plockmatic PowerSquare 224	
GBC Wire Binder G1	
GBC Punch G3	

¹ With PF-710 - small size guide

² With PF-710

³ Includes Main Body 1, RU-510, TD-502 and Main Body 2

⁴ Available around June 2022

– All specifications refer to letter-size paper of 80 gsm quality.
– The support and availability of the listed specifications and functionalities vary depending on operating systems, applications and network protocols as well as network and system configurations.

– Some of the product illustrations contain optional accessories.
– Specifications and accessories are based on the information available at the time of printing and are subject to change without notice.

– Konica Minolta does not warrant that any prices or specifications mentioned will be error-free.

– All brand and product names may be registered trademarks or trademarks of their respective holders and are hereby acknowledged.

RETHINK
PRINT

Learn more at
[ReThinkPrint.com](https://www.ReThinkPrint.com)



KONICA MINOLTA

KONICA MINOLTA BUSINESS SOLUTIONS U.S.A., INC.

100 Williams Drive, Ramsey, New Jersey 07446

[CountOnKonicaMinolta.com](https://www.CountOnKonicaMinolta.com)



Item #: ACCURIO6272PBRO
3/2022-Z