

Canon

imagePRESS V1000

COLOR PRODUCTION  
DIGITAL PRESS



Brilliant **V**ision. Inside and Out.

# imagePRESS V1000

## Introducing the imagePRESS V1000 digital press. Where performance meets possibility.

**SUPPORTS UP TO 150 lb. COVER\***

**PRODUCTION SPEED UP TO 101 ipm (LETTER)**

**MAXIMUM SHEET FEEDING CAPACITY \*\* 11,100**

**ENERGY STAR® CERTIFIED**

**PRINT RESOLUTION 2400 x 2400**

**MAINTAINS RATED SPEED ON UP TO 150 lb. COVER**

**AUTO DUPLEX MEDIA UP TO 51.2"\***

\* Optional accessories required.  
\*\* Capacity based on 20 lb. Bond.  
• Multi Drawer Paper Deck-E1 required.

# A whole new way to give life to your ideas.

In the ever-changing production marketplace, you need a partner with vision.

Introducing the imagePRESS V1000 color production digital press. Canon has taken the proven quality, productivity, and versatility of the imagePRESS brand and elevated it. With new, distinctive, vital technologies, the imagePRESS V1000 is designed to allow you to realize your vision more easily and efficiently than ever before.

Canon has synergized form and function so that even the most inexperienced operator can impress with superb color and exquisite output! The innovative fusing system is designed to help environments realize high productivity in a small package while also helping to reduce turnaround time. And the streamlined paper conditioner helps keep work moving with fewer interruptions. The Dynamic Image-Transfer Technology helps create amazing output on a large range of stocks, and the Inline Spectrophotometers and Multi D.A.T. help deliver predictable and repeatable color. Plus, the Precision Registration Technology helps produce highly accurate duplexed printing, even on long and heavy medias.

Quality. Versatility. Productivity. The imagePRESS V1000 digital press gives you the tools you need to compete—and thrive—in the demanding print world.

 **High-Productivity Fuser Technology**

 **Stunning Color Repeatability**

 **Full Solids and Vibrant Color**

 **Superb Registration Accuracy and Consistency**



imagePRESS V1000 shown with optional accessories.

# Smart technology means stellar productivity.

Canon's brilliant combination of advanced workflow automation and media flexibility can open up opportunities for new customers—and helps you obtain repeat business.

## Impressively Versatile

### Quality that can pay off

Print engages the senses, and when beautiful output appears on a wide range of stocks, brands can be elevated and profits can soar. With the imagePRESS V1000 digital press, you can offer high-margin opportunities.

### Beautiful work comes in all sizes

The imagePRESS V1000 can auto-duplex sheets up to 51.2" long and media up to 150 lb. Cover.\* Offer your customers new applications, from eye-catching posters to oversize brochures and creative marketing collateral.

### Luxury materials, textured stocks

Print vibrant color predictably, even on specialty medias such as magnets, synthetics, envelopes, and rigid stocks.\* Your customers can choose from a wide variety of surface types and custom-finished options, helping you to produce work that's precise and compelling.

## Remarkably Productive

### Efficiency is rewarded

Today's operators need to meet ever-increasing expectations under constantly changing conditions. Canon's POD-SURF (Surface Rapid Fusing) Technology allows printing on coated and heavier-weight stocks, up to 150 lb. Cover at rated speed.\*\* It handles complex, mixed-weight jobs easily for superb uptime, and the imagePRESS V1000 runs consistently at high speeds, so you can satisfy your customers *and* help sweeten your bottom line, quickly and efficiently.



## Outstanding efficiency ... automatically.



### Quick, Easy Registration

Minimize the hassle of front-to-back registration; it's easy, fast, and reliable with Canon's Precision Registration and optional sensing technologies.



### Repeatable Color

Multi D.A.T. provides automatic, real-time color correction and helps deliver direct feedback to the print engine for color consistency throughout long print runs.



### Crisp, Clear Images

The advanced Red VCSEL imaging laser writes every dot on the drum twice, outputting images with outstanding clarity and definition.

# Engineering meets artistry.

Achieve amazing color quality and repeatability—  
with minimal operator involvement.

## No More Guesswork

### Canon Integrated Color Control (ICC)

The advanced integration of Canon's hardware technology with popular software tools from the PRISMAsync or Fiery® controllers helps enable print environments to dial-in color with minimal involvement while helping to increase productivity.

## Anticipate Every Detail

### Dynamic Image-Transfer Technology

On virtually any surface, Canon's Dynamic Image-Transfer Technology can help provide full, rich color on a wide range of media surfaces. And, best of all, it's fully automatic—the imagePRESS V1000 digital press does the work for you.

## Accuracy at Your Fingertips

### Precision Registration Technology

The imagePRESS V1000 new Precision Registration Technology helps improve front-to-back alignment and consistency. The sophisticated internal monitoring and extended sensing capabilities\* allow superb registration accuracy on your most important booklet, postcard, and direct mail jobs.

\* Optional accessories required.

\*\* Multi Drawer Paper Deck-EI required.

◆ Optional software may be required.



### Carefree Automation

Time-consuming tasks can be completed efficiently and with minimal effort, thanks to the Inline Spectrophotometers.

- Press linearization
- G7® color profiling◆
- G7® calibration and verification◆



# Powerful, all-around performance.



## Revolutionary technology inside.

### **POD-SURF (Surface Rapid Fusing) Technology**

An innovative fuser permits printing at speeds of up to 101 ppm (Letter) and high productivity on mixed-media jobs.

### **Paper-Conditioner Technology**

Prepares media for inline and offline finishing. Sheets are less likely to curl and stick together, helping to preserve image quality, limit jamming, and avoid reprints.

### **Dynamic Image-Transfer Technology**

Variable secondary roller pressure optimizes the paper path, helping to improve both quality on heavyweight stocks and reliability of lightweight medias.

### **Sensing Unit\***

Set jobs up to adjust color tone accuracy and front-to-back registration before printing, then helps monitor and maintain these settings across a print run.

### **ILS (Inline Spectrophotometers)**

With the push of a button, these sensors allow advanced color adjustments such as engine linearization, media calibration, color profile creation, and color validation.\*\*

### **Precision Registration Technology**

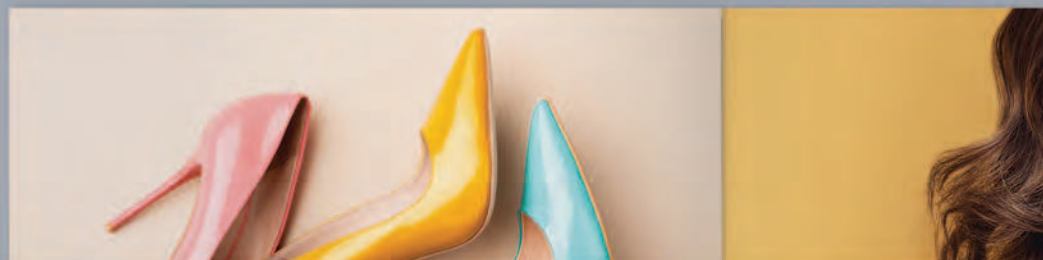
Multi-point checks allow highly accurate, front-to-back duplexed printing on sheets up to 52" and 150 lb. Cover.



## Outstanding results outside.



imagePRESS V1000 shown with optional accessories.



### Multi-Exposure Technology

When creating images, the Red VCSEL laser writes every dot on the drum twice, which helps maintain high image quality consistently across long production runs.

### Multi D.A.T.

Twenty (20) multi-gradation density patches are measured and corrected automatically during production, helping ensure consistent halftones.

### Translucent CV Toner

Helps produce consistent, vivid, and crisp images on a wide range of media with a realistic, offset-like finish.

### Red VCSEL

Canon's advanced 32-beam Red VCSEL laser delivers 2400 x 2400 dpi print resolution, outputting detailed color images with outstanding definition at high speeds.

### Multi-Drawer Paper Deck\*

The 5,000-page capacity\* trays are equipped with air-assist and air-separation, and a designated supplemental purge tray is used for when multiple sheets are detected during feeding.

\* Optional.

\*\* Optional software may be required.

◆ Capacity based on 20 lb. Bond.

# Print on the cutting edge with powerful, intuitive tools.

High performance and remarkable efficiency are yours with the PRISMAsync print server's impressive color tools and G7<sup>®</sup> grayscale calibration.

## PRISMAsync Print Server

Canon's PRISMAsync print server can help you boost production capacity and lower costs. It delivers high-performance, deadline-driven printing that can help you grow your business and promote successful relationships.

The PRISMAsync print server can consolidate control of your production workload into a single hub. Easily monitor and control jobs, whether simple or complex, from a single, intuitive interface.

PRISMAsync Remote Manager allows you to monitor multiple presses and edit job properties, manipulate color curves, manage queues, and submit and reroute print jobs.

Embedded in-RIP G7<sup>®</sup> calibration utilizes the Inline Spectrophotometers to enable operators to calibrate, profile, and verify the color of the imagePRESS V1000 digital press to help achieve a near-neutral print condition quickly and easily.

The PRISMAsync Automated Color Task feature combines multiple color setup functionalities into a single action. Thanks to the Inline Spectrophotometers, automated press linearization, G7<sup>®</sup> media calibration and profile creation, and verification procedures are done for you quickly and easily for full, hands-off automation.

The PRISMAanalytics Dashboard puts recorded press data at your fingertips. Help reduce turnaround time, waste, and costs with access to detailed information on your usage, production, and consumption.





# Efficiently manage prepress and color with flexible workflows.

The Fiery print server's easy-to-use, familiar interface and smart color-management technology offer endlessly flexible solutions.

## imagePRESS Server D3000

Powered by the Fiery FS500 Pro system software and combined with the innovative Fiery HyperRIP feature, you can help improve processing time for complex and graphic-intensive jobs.

The imagePRESS Server D3000 adds new and upgraded technologies to familiar workflow and prepress features. Together, they further enhance the Fiery tools for workflow automation and advanced color management.

**Fiery Job Expert** analyzes incoming PDF files and dynamically chooses the ideal print settings to help achieve high print quality and optimize processing time.

**Fiery Preflight Pro\*** permits users to verify file compliance against industry standards—and view warnings and error messages in an interactive report.

**Fiery JobFlow Base** helps automate job preparation steps in prepress workflows to produce print-ready files quickly and easily, increasing productivity and reducing costs.

**Express Media Color Manager** allows users to calibrate and create a media profile for fast, easy, and reliable color management, while **Auto Recal** checks each job's paper calibration timer to recalibrate, if necessary, before printing. And the **Inline Spectrophotometers** can perform both these functions as well as initialize press linearization and Spot Pro Optimization.

**Media Librarian**, Canon's sophisticated paper management application, creates, edits, and organizes paper stocks from a single, intuitive interface.

\* Optional.



# Start Strong. Finish Even Stronger.

With robust, inline capabilities and a variety of integrated, optional solutions for existing offline workflows, your finishing needs are covered.

Produce a broad range of deliverables—from trifold brochures to saddle-stitched booklets, direct mail to business cards, and collateral and training materials to flyers and posters.

Diversify your offerings with the ability to print on attention-grabbing stocks, including synthetic media, envelopes, magnets, textured papers, and banner sheets in a range of sizes.

And take advantage of Canon's productive, high-capacity stacker for your offline finishing requirements.

## Finishing Options



### Document Insertion Unit

This module enables insertion of slip sheets or preprinted covers for booklets and complex jobs.



### Professional Punching and Creasing

The many die patterns offered for in-line hole punching (including double punching) and creasing help minimize toner cracking on the spines of saddle-stitched booklets.



### Perfect Binding

Using hot glue, this module binds covers to book-blocks of up to 200 pages\* and can trim on all three sides for full-bleed books or manuals.



### High-Capacity Stacking

Realize outstanding productivity with unload-while-run capability, helping to provide uninterrupted printing with stacking up to 6,000 sheets.\*



### Ring Binding

Use the GBC eWire Pro to automate the time-consuming process of wire binding manuals, booklets, and reports.



### Paper Folding

Offer promotional pamphlets, brochures, and more with the ability to produce Z-fold, C-fold, accordion fold, and double-parallel fold documents.



### Booklet Trimming

This helps maintain high productivity with a large-capacity trim waste bin and on-the-fly waste removal for continuous production. Modules can be combined with the Booklet Finisher to produce professional, full-bleed, square-bound booklets in-line.



### Professional Booklet-Makers

Deliver professional-looking, lay-flat booklets with speed and simplicity using the Plockmatic BLM50/35 for up to 200-page\* professional, square-folded, saddle-stitched booklets.

## Feeding Options



### Multi Drawer Paper Deck

Equipped with air-assist and air-separation, it supports up to 13" x 19.2" and 150 lb. Cover. The 5,000-sheet\* capacity allows jobs to run with minimal interruption.



### POD Deck Lite

Designed for locations with space restrictions, this deck's 3,500-sheet\* capacity with air-assist and air-separation supports paper sizes up to 13" x 19.2".



### POD Deck Lite XL

In addition to the capabilities of the POD Deck Lite, this feeding option holds up to 1,000 sheets\* of media up to 13" x 30" in size—optimal for six-panel brochures, book covers, and posters.

\* Capacity based on 20 lb. Bond.



imagePRESS V1000 shown with optional accessories.

# Expand your opportunities.

Open up new possibilities for customer satisfaction with Canon U.S.A., a business partner you can count on for cutting-edge printing solutions.

## Empower Your Printing with PRISMA

Whether you're an in-house print center or a commercial print service provider, you strive to deliver a personal, flexible, and efficient value-added service. You must also be able to produce short runs at competitive rates while still making a profit. This demands efficient workflow management and the ongoing monitoring and control of printer performance, wherever you are.

PRISMA Home is the portal at the heart of PRISMA cloud applications. It provides central and unified access to your PRISMA cloud-connected workflow applications and those tools used for monitoring and controlling press performance. With PRISMA Home, you can leverage multiple engines at once from compatible PRISMA cloud applications and access your critical data 24/7 from virtually anywhere.

## Teaming Up with a Leader

The imagePRESS V1000 digital press offers opportunities that can help transform your business, helping you save time so you can focus on growth. With 80-plus years of experience in designing and developing innovative imaging technology, Canon is constantly searching for new solutions and improving its offerings to keep you at the forefront. Together, we can produce new ideas and applications that can help inspire your customers, improve your productivity, and enrich your business.



Discover More:  
[usa.canon.com/productionprinting](https://usa.canon.com/productionprinting)

# imagePRESS V1000

## Specifications

<b>Print Speed (Simplex/Duplex)</b>	<b>Letter</b>	Up to 101 ipm
	<b>11" x 17"</b>	Up to 52 ipm
	<b>12" x 18"</b>	Up to 50 ipm
	<b>13" x 19"</b>	Up to 50 ipm
	<b>13" x 30"</b>	Up to 28 ipm
<b>Scan Speed (Letter, 300 dpi)</b>		Up to 270 opm
<b>Print Resolution</b>	<b>Maximum</b>	2400 x 2400 dpi
<b>Paper Capacity</b>	<b>Standard</b>	Up to 1,100 Sheets
	<b>Maximum</b>	Up to 11,100 Sheets
<b>Paper Size</b>	<b>Standard</b>	3.9" x 5.8" to 13" x 19.2"
	<b>Optional</b>	5.5" x 7.2" to 13" x 51.2"
<b>Paper Weight</b>	<b>Standard</b>	14 lb. Bond to 110 lb. Cover
	<b>Optional</b>	14 lb. Bond to 150 lb. Cover
<b>Automatic Duplexing</b>	<b>Standard</b>	3.9" x 5.8" to 13" x 19.2"
	<b>Optional</b>	5.5" x 7.2" to 13" x 51.2"
<b>Envelopes</b>	#10 Business, Monarch, 6" x 9", 9" x 12", 10" x 13", DL, ISO-C5	
<b>Print Servers</b>	PRISMAsync print server imagePRESS Server D3000	



Canon

usa.canon.com



As an ENERGY STAR® Partner, Canon U.S.A., Inc. qualified this model as meeting the ENERGY STAR® energy efficiency criteria through an EPA recognized certification body. ENERGY STAR and the ENERGY STAR mark are registered U.S. marks. Canon and imagePRESS are registered trademarks of Canon Inc. in the United States and may also be registered trademarks or trademarks in other countries. PRISMA is a registered trademark of Canon Production Printing Netherlands B.V. All other referenced product names and marks are trademarks of their respective owners. Some printer output images may be simulated. Specifications and availability subject to change without notice. Not responsible for typographical errors.  
©2022 Canon U.S.A., Inc. All rights reserved.  
0422-IPV1000BRO-PDF-DW

**CANON**  
**GENUINE**  
TONER, CARTRIDGE  
& PARTS

